

HSF

Recommended P.C.B Layout(Top Side)
(PCB BOARD TOLERANCE±0.05)

NOTES:

Current Rating:18A
Voltage Rating:300V
Contact Resistance:8milliohm Max
Withstand Voltage:AC2000V
Insulation Resistance:1000Mmegohm Min
Operation Temperature:-40°C to +105°C

Housing Material:PA66+30%GF(Ul94V-0)
Contact Material:Brass
Inlay Material:Brass

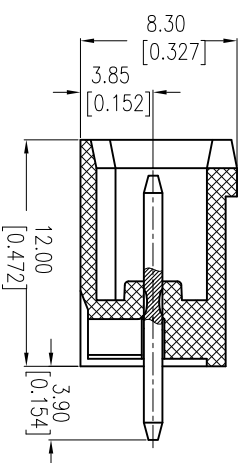
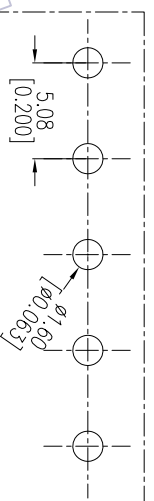
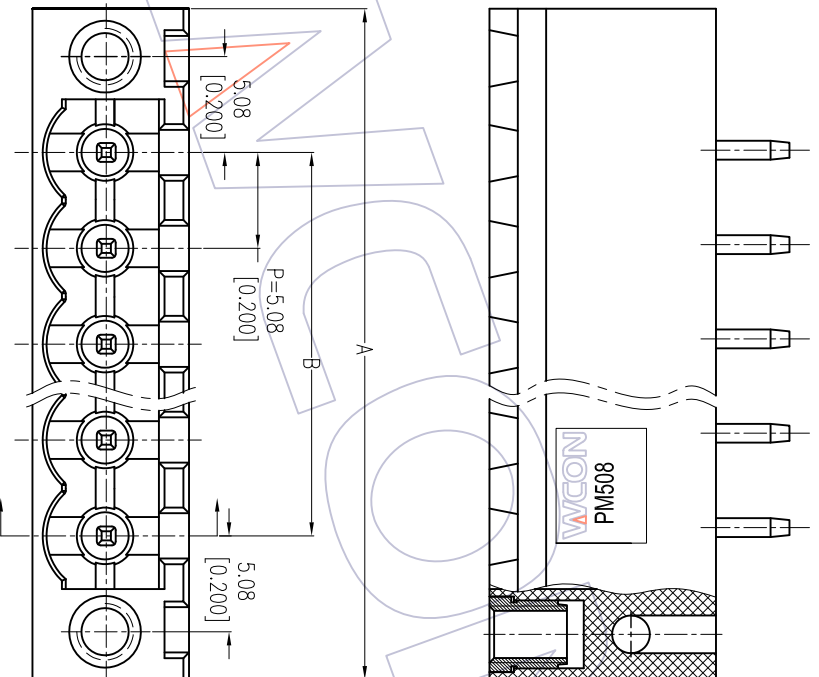
Ordering Information:

P M 508 - 1 S XX A SM 2

M=Male Pitch 508=5.08
No.of Pins 02=24P Color A=Green SM=Male Tin
Contact Plated Series No.

13P	76.20 ±0.30	60.96 ±0.30	24P	132.08 ±0.50	116.84 ±0.50
12P	71.12 ±0.30	55.88 ±0.30	23P	127.00 ±0.50	111.76 ±0.50
11P	66.04 ±0.30	50.80 ±0.30	22P	121.92 ±0.50	106.68 ±0.50
10P	60.96 ±0.30	45.72 ±0.30	21P	116.84 ±0.50	101.60 ±0.50
9P	55.88 ±0.30	40.64 ±0.30	20P	111.76 ±0.50	96.52 ±0.50
8P	50.80 ±0.30	35.56 ±0.30	19P	106.68 ±0.40	91.44 ±0.40
7P	45.72 ±0.20	30.48 ±0.20	18P	101.60 ±0.40	86.36 ±0.40
6P	40.64 ±0.20	25.40 ±0.20	17P	96.52 ±0.40	81.28 ±0.40
5P	35.56 ±0.20	20.32 ±0.20	16P	91.44 ±0.40	76.20 ±0.40
4P	30.48 ±0.20	15.24 ±0.20	15P	86.36 ±0.40	71.12 ±0.40
3P	25.40 ±0.20	10.16 ±0.20	14P	81.28 ±0.40	66.04 ±0.40
2P	20.32 ±0.20	5.08 ±0.10			
Pin	A	B	Pin	A	B

ITEM	Pitch	Mating
Standard	5.08	PF508
Alternate		



A2	2013/06/05	Modify The Housing Material	OPERATION	DRAW	DATE	SCALE	FIT	PART NO.	TITLE: 5.08mm Pitch Male Pluggable Terminal Blocks Customer NO.
A1	2012/05/17	Modify PF508-02-XX-A-SM → PF508-1SXXASM2	XX X.XXX X.XXX	Tsingna	2012/05/17	mm inch	A4	PMS08-1SXXASM2	
A0	2011/06/08	NEW	Angle DIM	APPROVE	DATE	SHEET PROJ.	1/1		
REV	DATE	MODIFICATION DESCRIPTION	CHANGE						

WCON

Http: www.wcon.com

WCON-Dongguan Tel: +86 769 85358920
Fax: +86 769 85358915
E-mail: sdes@wcon.com

WCON-Kunshan Tel: +86 512 57468408
Fax: +86 512 57468468
E-mail: sdesks@wcon.com